

IP Rated Electrical Enclosures Range and Accessory Products

Including Plastic and Steel Enclosures,
Junction Boxes, Control Equipment & Connectors



IP65

IP66

IP67

IP68

MAKING THE **RIGHT** CONNECTIONS



Designed for Today's Professional Electricians

Hylec-APL manufactures a wide range of Electrical Enclosures and Control Equipment, designed to meet the highest standards.

Manufactured in a variety of ABS-HB flame retardant plastic, galvanised steel, stainless steel and aluminium, the range is rated to IP65, IP66, IP67, IP68, IK08 and IK10 and the steel range comes with a 3-year corrosion warranty.

Each door enclosure is supplied complete with galvanised mounting plates and screws and also comes equipped with lock and key. The ABS plastic enclosures have an option for transparent doors and the metal door enclosures have pre-wired earth straps.

Finally, there is a wide variety of sizes across the range, certain to cover your requirements.

In addition to the enclosures, Hylec also supplies several ranges of associated equipment that is fully compatible and manufactured to the same high standards. These include isolators, control stations, switching equipment, lamps, filter fans, temperature control equipment, connectors and cable glands.

Range	Description	Closure Type	No. of Sizes	Complete Kit Inc.*	Lockable, Key Supplied	Transparent Door/Lid Option	IP/IK Rating	Prewired, Fitted Earth Strap	Internal Mountings Included	Temp Range
DE0 Series	Flame Retardant ABS/Polycarbonate Enclosures	Screw	8	✓		✓	IP67/IK08		✓	-10°C to +65°C
DN Series	Flame Retardant ABS Enclosures	Screw	7	✓		✓	IP66/IK08		✓	-10°C to +80°C
DED Series	Flame Retardant ABS Door Enclosures	Door	10	✓	✓	✓	IP65/IK08		✓	-20°C to +85°C
DEDS Series	Galvanised Steel Door Enclosures	Door	21	✓	✓		IP66/IK10	✓	✓	-20°C to +55°C
DEDSS Series	Stainless Steel Door Enclosures	Door	6	✓	✓		IP66/IK10	✓	✓	-20°C to +55°C
Die Cast Series	Aluminium Harsh Environment Enclosures	Screw	10	✓			IP68/IK10			-60°C to +200°C

*Hylec enclosures are supplied complete and ready for use. See specific pages for details.

For further information contact our helpful staff (see below).

IP67

DE0 Enclosures

IP/IK RATING	IP67/IK08
COLOUR	GREY/BLACK/TRANSP
TEMP. RATING	-10°C TO +65°C
MATERIAL	ABS/POLYCARBONATE



OVERVIEW

Available in either ABS plastic (UL94-HB) or polycarbonate (UL94-V0) and in standard or deep bases, the DE0 range is rated to IP67.

The range is available with a unique snap-on DIN rail and flange brackets and is suitable for enclosing printed circuit boards vertically (via mounting slots) or horizontally.

The enclosures come in for different sizes with an option for standard or deep bases. The captive plastic screws ensure they will not be dropped/lost during fixing.

The DE0 range is also available with pre-drilled holes for control switches, see the accessories page.



FEATURES

IP67 & IK08 RATED

FLAME RETARDANT ABS TO UL94-HB

ALSO AVAILABLE IN POLYCARBONATE UL94-V0

CAPTIVE SCREWS IN LID

AVAILABLE IN A COMBINATION OF GREY, BLACK AND TRANSPARENT COLOURS

UNIQUE SNAP-ON DIN RAIL AND FLANGE BRACKETS AVAILABLE

COMPLETE WITH M20 CABLE KNOCK-OUTS

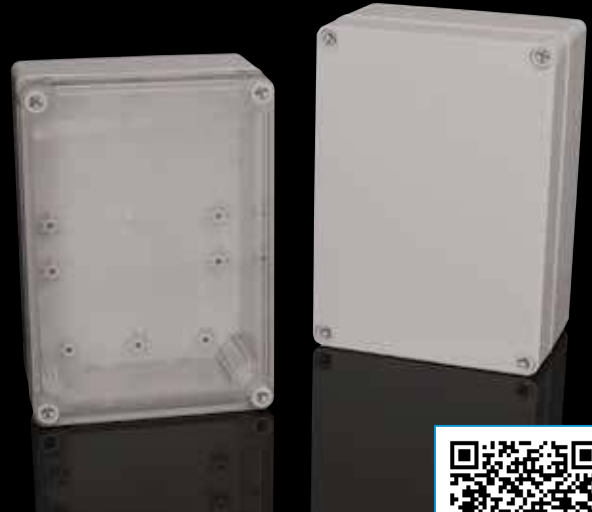
Range Sizes

W (mm)	D (mm)	Standard Base	Deep Base
		H (mm)	H (mm)
80	73	53	78
80	106	53	78
80	139	53	78
80	172	53	78

IP66

DN Junction Boxes/Enclosures

IP/IK RATING	IP66 / IK08
COLOUR	GREY (RAL7035)
TEMP. RATING	-10°C TO +80°C
MATERIAL	ABS PLASTIC



OVERVIEW

Manufactured from flame retardant ABS to UL94-HB, our range of DN Junction Boxes is manufactured to a very high quality which can endure high impact.

A solid wall thickness of between 3 & 4mm makes these enclosures incredibly tough and durable. Each one is moulded with internal mounting stand-offs and vertical PCB mounting slots. The DN Junction Box is ideal for use as a cable junction box or to enclose PCBs, control & emech components.

Available in 7 sizes, with optional Galvanised Steel, Component Mounting Plate

KIT INCLUDES:

- Pre-cut length of 35mm DIN rail section
- Fixing screws for supplied DIN rail



FEATURES

IP66 & IK08 RATED

FLAME RETARDANT ABS TO UL94-HB

MULTIPLE SLOTS FOR VERTICAL PCB MOUNTING

CAPTIVE SCREWS IN LID

COVER AVAILABLE IN GREY (RAL 7035) OR TRANSPARENT

SUPPLIED WITH A 35MM DIN RAIL SECTION & MOUNTING SCREWS

SOLID DOORS

Product Code	W (mm)	H (mm)	D (mm)
DN12E	125	125	75
DN13E	125	125	100
DN14E	125	175	75
DN15E	125	175	100
DN16E	125	175	125
DN17E	125	175	150
DN18E	175	175	125

TRANSPARENT DOORS

Product Code	W (mm)	H (mm)	D (mm)
DN12T	125	125	75
DN13T	125	125	100
DN14T	125	175	75
DN15T	125	175	100
DN16T	125	175	125
DN17T	125	175	150
DN18T	175	175	125

IP65

DED Door Enclosures

IP/IK RATING	IP65 / IK08
COLOUR	GREY (RAL7035)
TEMP. RATING	-20°C TO +85°C
MATERIAL	ABS PLASTIC



OVERVIEW

Manufactured from flame retardant ABS to UL94-HB, our DED range of Door Enclosures is manufactured to a very high quality which can endure high impact. Ideal for use in harsh locations such as salt air conditions and dry dust environments, DED enclosures come complete with everything you need in one kit. Available in 10 sizes.

KIT INCLUDES:

- Galvanised mounting plate plus fixing screws
- 1 x Key Included as Standard

TRANSPARENT DOORS

Product Code	W (mm)	H (mm)	D (mm)
DED011	300	200	130
DED012	350	250	150
DED014	400	300	170
DED015	400	300	220
DED016	500	350	190
DED017	500	400	240
DED018	600	400	220
DED020	700	500	250
DED3013	500	400	175
DED3022	800	600	260

FEATURES

IP65 & IK08 RATED

FLAME RETARDANT ABS TO UL94-HB

BODY SUPPLIED IN GREY (RAL7035)

DOOR SUPPLIED IN GREY (RAL7035) OR TRANSPARENT OPTION

TEMPERATURE RANGE OF -20°C TO +85°C

AVAILABLE IN 10 SIZES

SOLID DOORS

Product Code	W (mm)	H (mm)	D (mm)
DED001	300	200	130
DED002	350	250	150
DED004	400	300	170
DED005	400	300	220
DED006	500	350	190
DED007	500	400	240
DED008	600	400	220
DED010	700	500	250
DED3003	500	400	175
DED3021	800	600	260



IP66

DEDS Steel Door Enclosures

IP/IK RATING	IP66 / IK10
COLOUR	GREY (RAL7035)
TEMP. RATING	-20°C TO +55°C
MATERIAL	GALVANISED STEEL



OVERVIEW

Every Hylec DEDS Door Enclosure comes complete with everything you need in one kit. Manufactured from galvanised steel, each door enclosure & 2mm back plate comes with a 3 year guarantee against corrosion. Available in 21 sizes.

KIT INCLUDES:

- Galvanised Steel Wall Mounting Brackets
- Galvanised Mounting Plate
- Spacers for the Back Plate
- Pre-wired and Fitted Earthing Strap
- Stainless Steel Studs
- Metal Locks and Key supplied as Standard



FEATURES

IP66 & IK10 RATED

PRE-WIRED & FITTED EARTH STRAP

GLAND PLATE WITH IP66 SEALING GASKET

COMPLIANCE TO IEC 60529 & CE CERTIFIED

PERFORATED STEEL BACK PLATE AVAILABLE

3 YEAR GUARANTEE AGAINST CORROSION

Product Code	W (mm)	H (mm)	D (mm)
DEDS0099	250	200	130
DEDS0100	300	200	130
DEDS0102	300	350	130
DEDS0200	350	250	150
DEDS0300	500	400	175
DEDS0400	400	300	170
DEDS0500	400	300	220
DEDS0502	400	400	200
DEDS0600	500	350	190
DEDS0601	500	400	200
DEDS0611	500	400	175
DEDS0700	500	400	240
DEDS0702	500	500	200
DEDS0800	600	400	200
DEDS0802	600	400	250
DEDS0803	600	600	250
DEDS0900	800	400	200
DEDS1000	700	500	250
DEDS1001	800	600	260
DEDS1012	1000	600	300
DEDS1013	1000	600	300

IP66

DEDSS Stainless Steel Door Enclosures



IP/IK RATING	IP66 / IK10
FINISH	POLISHED STEEL
TEMP. RATING	-20°C TO +55°C
MATERIAL	STAINLESS STEEL

OVERVIEW

Manufactured from grade 304 Stainless Steel, each enclosure comes complete with everything you need in one kit - so there is no need to purchase everything individually (saving you valuable time). Available in 6 sizes.

KIT INCLUDES:

- Galvanised Steel Wall Mounting Brackets
- Galvanised Mounting Plate
- Spacers for the Back Plate
- Pre-wired and Fitted Earthing Strap
- Stainless Steel Studs
- Metal Locks and Key supplied as Standard



FEATURES

IP66 & IK10 RATED

PRE-WIRED & FITTED EARTH STRAP

STAINLESS STEEL HOUSING (GRADE 304) *

2MM GALVANISED STEEL BACK PLATE

METAL LOCK & KEY

AVAILABLE IN 6 SIZES

* Marine Grade 316 also available on request

Product Code	W (mm)	H (mm)	D (mm)
DEDSS3101	300	200	150
DEDSS3102	300	200	150
DEDSS3402	400	300	200
DEDSS3502	400	400	200
DEDSS3601	500	400	200
DEDSS3702	500	500	200

Rotary Isolators

Made with high quality components, this range of isolators represents extremely good value

IP68



AVAILABLE SIZES AC & DC

AC Part No.	Amps	H (mm)	W (mm)	D (mm)
DE1S.04.20AC	20A	145	80	98
DE1S.04.25AC	25A	145	80	98
DE1S.04.32AC	32A	145	80	98
DE1S.04.40AC	40A	145	80	98
DE1S.04.63AC	63A	180	81	98
DE1S.04.80AC	80A	180	81	98
DE1S.04.100AC	100A	180	81	98

DC Part No.	Amps	H (mm)	W (mm)	D (mm)
DE1S.16DC	16A	180	81	98
DE1S.25DC	25A	180	81	98
DE1S.32DC	32A	180	81	98

Kwik-fix cable glands

A range of unique cable glands that can be secured from the exterior side of the connector box

IP66

CABLE SIZES:
M25 11-17MM
M20 8-12MM
M16 5-10MM



FEATURES

- ASSEMBLY FROM ONE SIDE
- NO INTERNAL LOCK NUT NEEDED
- REDUCED ASSEMBLY TIME
- NO SPECIAL TOOLS NEEDED
- IDEAL WHEN SPACE IS LIMITED

Weatherproof connectors

IP68

Rated up to IP68/IP69K The Weatherproof range of electrical connectors represents the cutting edge of technology. Designed to be fully reliable in the most adverse of conditions, Weatherproof connectors are simple and quick to use.

IP69K



Control Stations

A comprehensive and versatile range of control stations

IP66



FEATURES

- INSULATION RESISTANCE - >100MOHM @ 500VDC
- ENCLOSURES SEALED UP TO IP66
- AVAILABLE WITH UNIQUE SNAP ON DIN RAIL, MOUNTING FEET AND FLANGE BRACKETS
- 2 CONTACT BLOCKS FITTED AS STANDARD (1XN/O 1XN/C)
- OPERATING TEMPERATURE -10°C TO +65°C

Venting Elements

IP69K

Hylec venting elements are quick and easy to install and control the humidity and condensation levels within enclosures.

Available in black or grey, sizes M12, M20 and M40.



FEATURES

- TEMPERATURE RATING -40°C TO 100°C
- BREATHABLE YET WATERTIGHT PES MEMBRANE
- IP RATED UP TO IP69K